

My RSS Converter

User Guide

Table of contents:

1	INTRODUCTION.....	3
1.1	Installation procedure	3
2	MY RSS CONVERTER INTERFACE	8
3	SELECTING A PROFILE	9
3.1	Creating a New Profile.....	9
3.2	Deleting a Profile	11
4	SELECTING RSS FEED SOURCE	12
5	GENERATING SETTINGS	13

List of figures:

Figure 1:	Installation procedure (step 1/7)	3
Figure 2:	Installation procedure (step 2/7)	4
Figure 3:	Installation procedure (step 3/7)	4
Figure 4:	Installation procedure (step 4/7)	5
Figure 5:	Installation procedure (step 5/7)	5
Figure 6:	Installation procedure (step 6/7)	6
Figure 7:	Installation procedure (step 7/7)	7
Figure 8:	My RSS Converter Interface.....	8
Figure 9:	Managing profiles	9
Figure 10:	Creating a new profile (step 1/2)	10
Figure 11:	Creating a new profile (step 2/2)	10
Figure 12:	Deleting a profile (step 1/2)	11
Figure 13:	Deleting a profile (step 2/2)	11
Figure 14:	Selecting the source	12
Figure 15:	Setting up Feed parameters	13
Figure 16:	Setting the XML file name	14
Figure 17:	Viewing XML Source	14

1 INTRODUCTION

This document is a detailed guide for using the “My RSS Converter” application. Each of the tasks inside the application is described inside the appropriate sections of this document.

1.1 Installation procedure

In order to start installing “My RSS Converter” double click on the installation file “My RSS Converter.exe”. The welcome screen will be displayed.

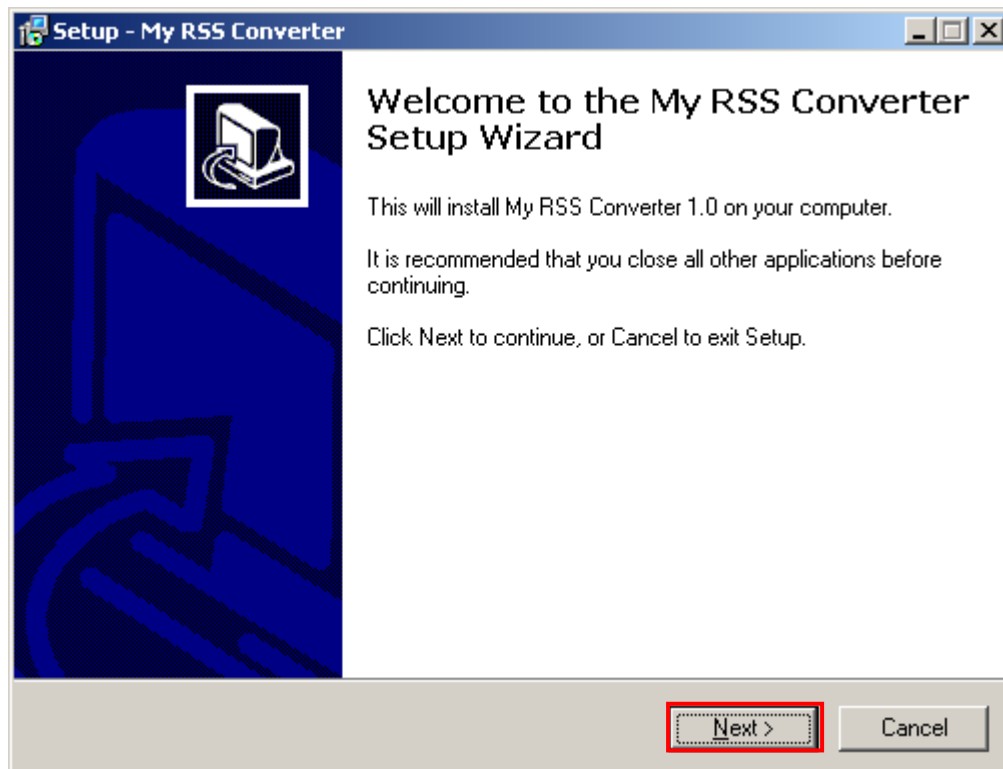


Figure 1: Installation procedure (step 1/7)

In order to continue installing “My RSS Converter”, click on the “Next” button and the “License Agreement” screen will be displayed.

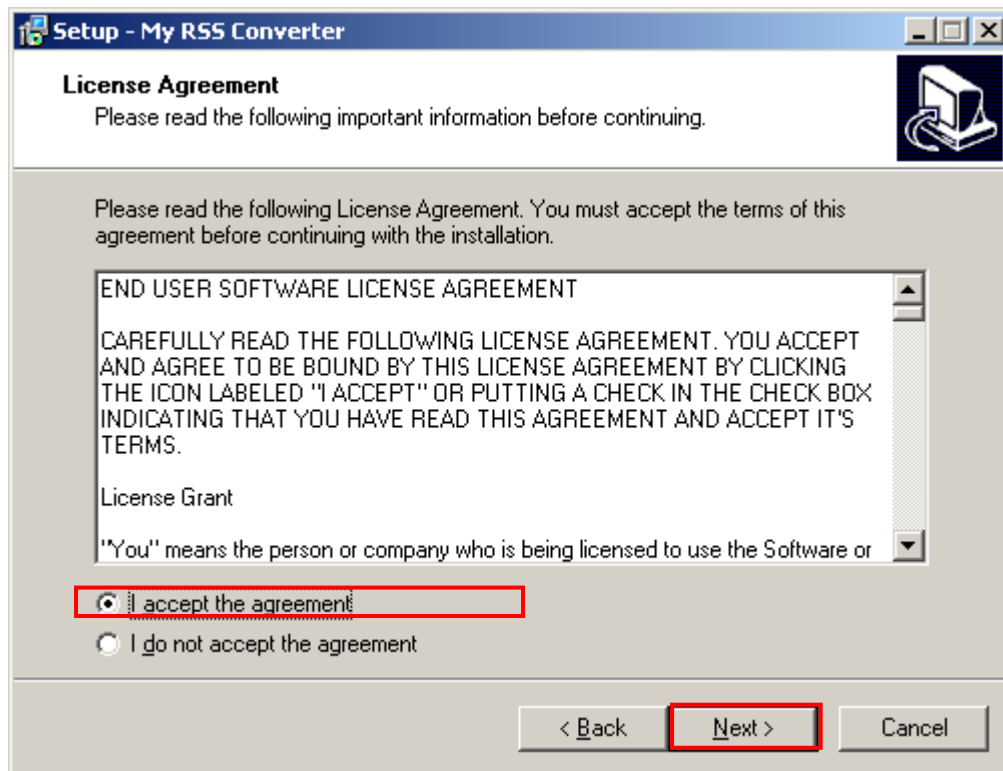


Figure 2: Installation procedure (step 2/7)

Select the “I accept the terms of the license agreement” radio button and click the “Next” button. The following screen will be displayed.

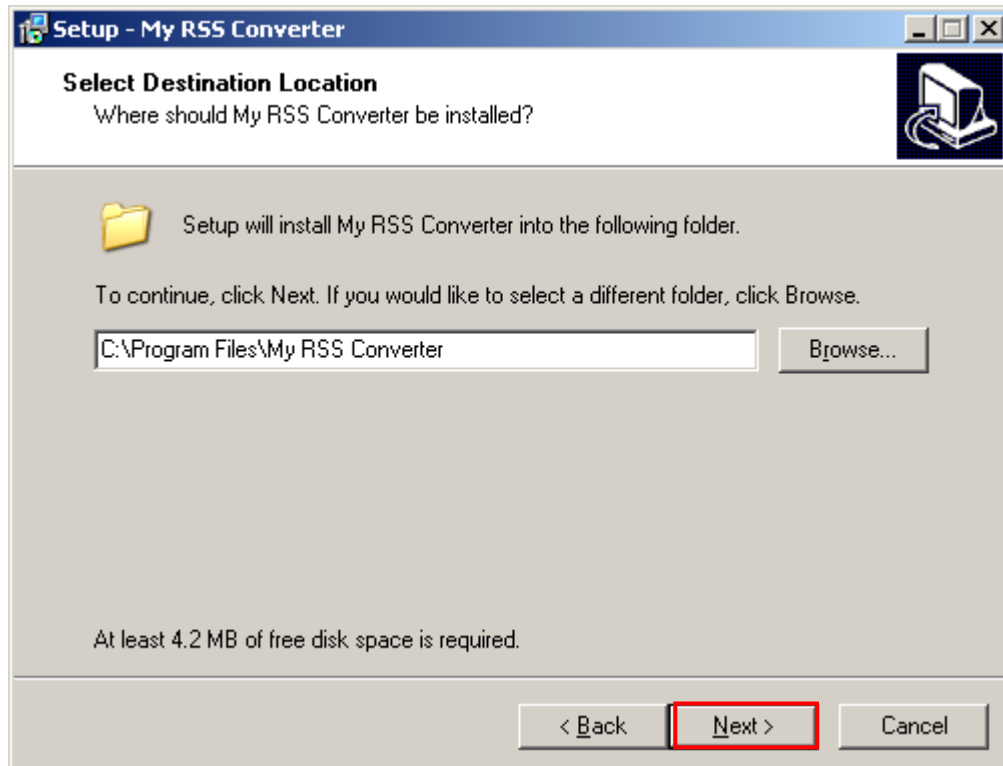


Figure 3: Installation procedure (step 3/7)

You can choose to install the application to the default directory (C:\Program Files\My RSS Converter) or set the desired article by clicking the “Change” button. Once you have defined the destination location, click the “Next” button. The following screen will be displayed.

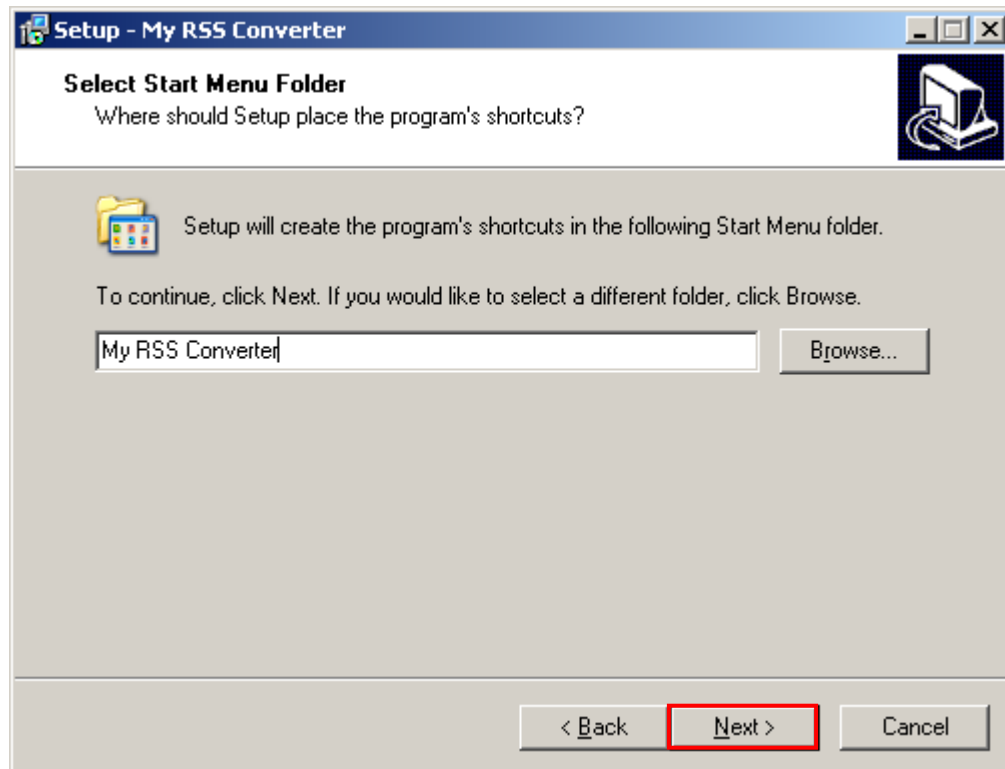


Figure 4: Installation procedure (step 4/7)

Choose the start menu folder inside this screen or leave the default setting. Click on the “Next” button to continue installing “My RSS Converter”. The following screen will be displayed.

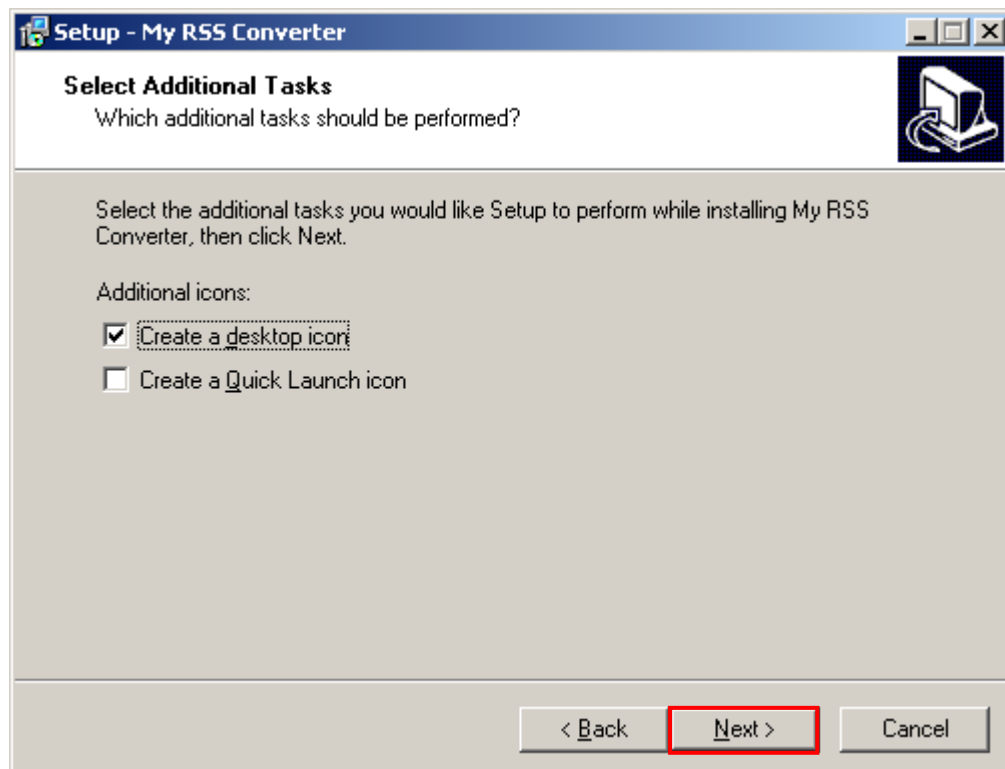


Figure 5: Installation procedure (step 5/7)

The following options are available inside this screen:

- **Create a desktop icon** – select this option if you wish to create an icon on your desktop
- **Create a Quick Launch icon** – select this option if you wish to create an icon inside your Quick Launch menu

Choose the desired options and click on the “Next” button to continue. The following screen will be displayed.

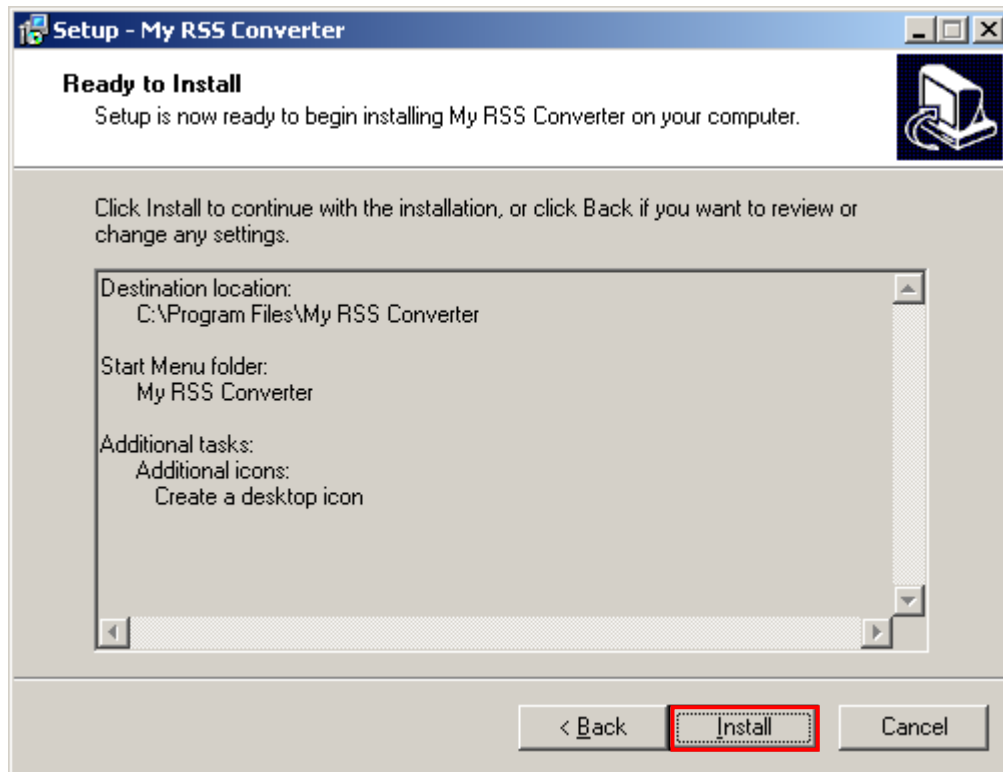


Figure 6: Installation procedure (step 6/7)

Inside this screen you can still determine to go back and change the settings, or click the “Next” button in order to install the application. The following screen will be displayed once you click the “Next” button.

The progress indicator will be displayed. Wait until it reaches the end and the following screen will be displayed.

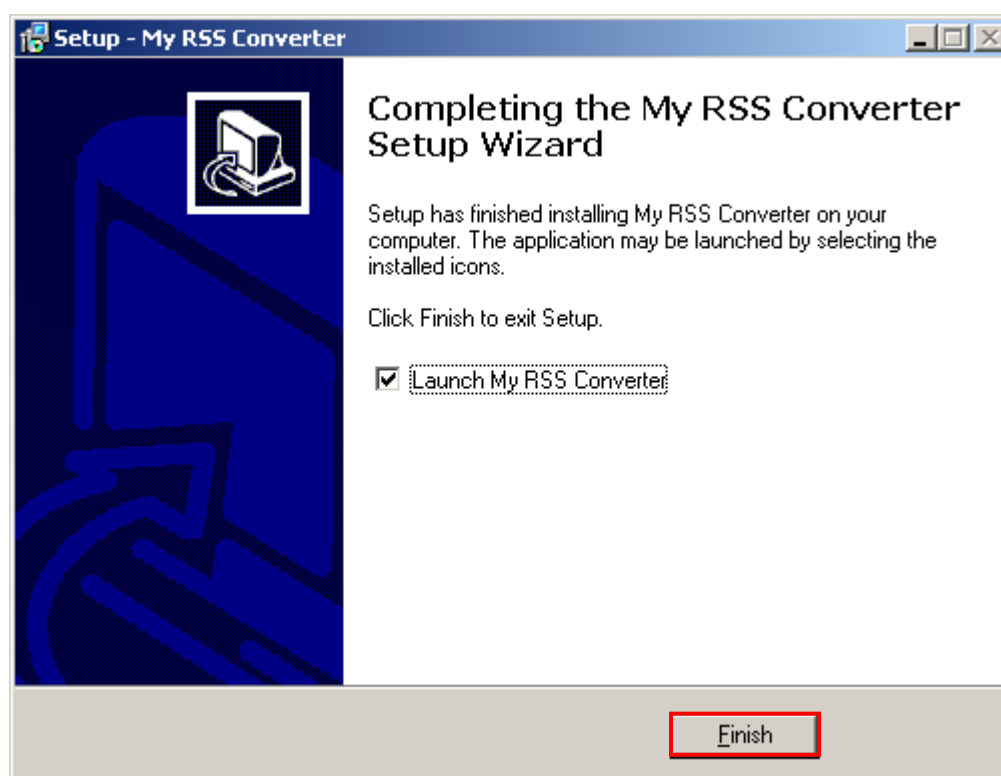


Figure 7: Installation procedure (step 7/7)

Click on the “Finish” button in order to complete the installation procedure.

2 MY RSS CONVERTER INTERFACE

This section of the document will give the definition of the “My RSS Converter” interface.

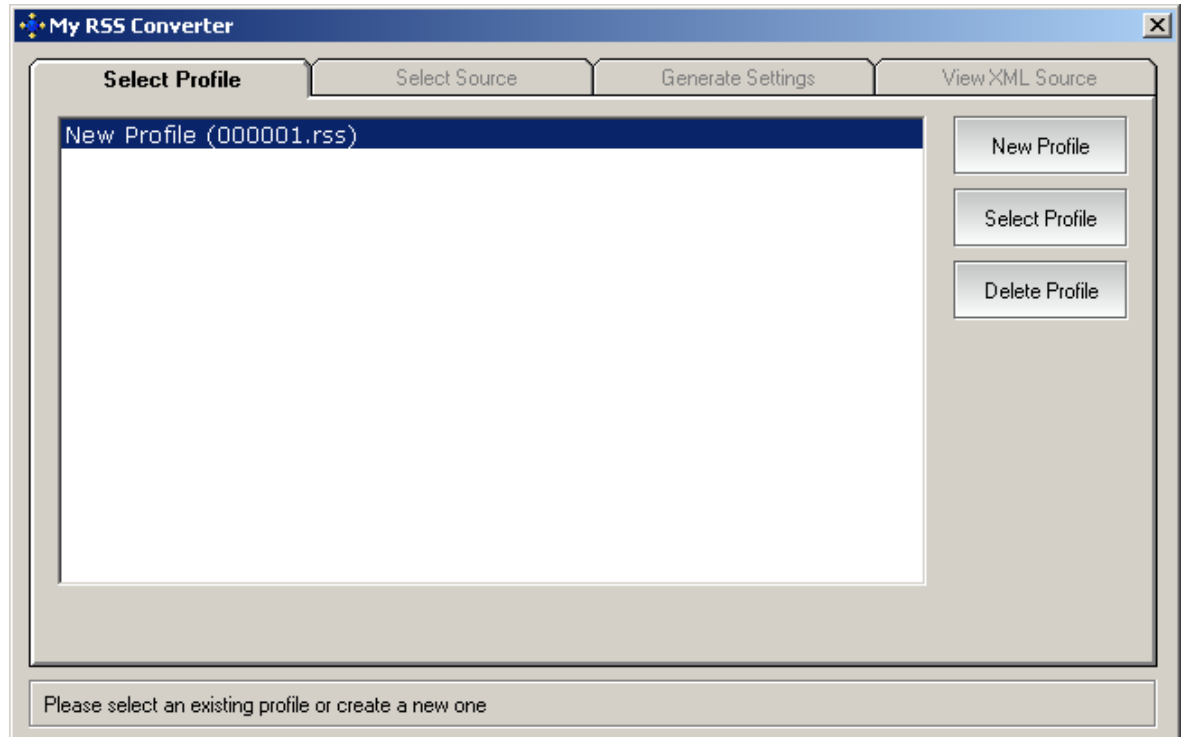


Figure 8: My RSS Converter Interface

The interface contains the following elements:

- **Select Profile** – option for selecting and managing profiles (see section 3)
- **Select Source** – option for selecting the feed source (see section 4)
- **Generate Settings** – option for generating feed settings (see section 5)
- **View XML Source** – option for viewing XML source (see Figure 17)

3 SELECTING A PROFILE

The first step is selecting or creating a new profile within the first screen.

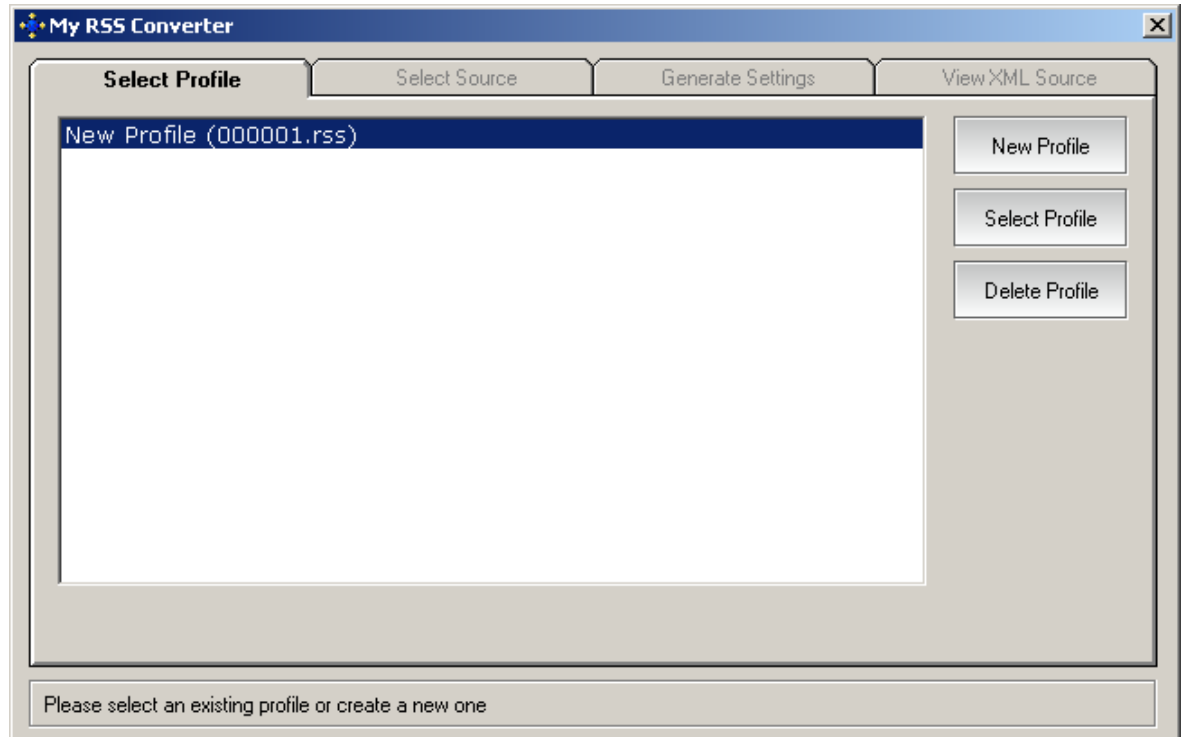


Figure 9: Managing profiles

The following parameters are available inside this screen:

- **New Profile** – option for creating a new profile (see section 3.1)
- **Select Profile** – option for choosing the desired profile; you will be moved to the “Select Source” step (see section 4)
- **Delete Profile** – option for deleting a profile (see section 3.2)

3.1 Creating a New Profile

In order to create a new profile, click on the “New Profile” button inside the main screen.

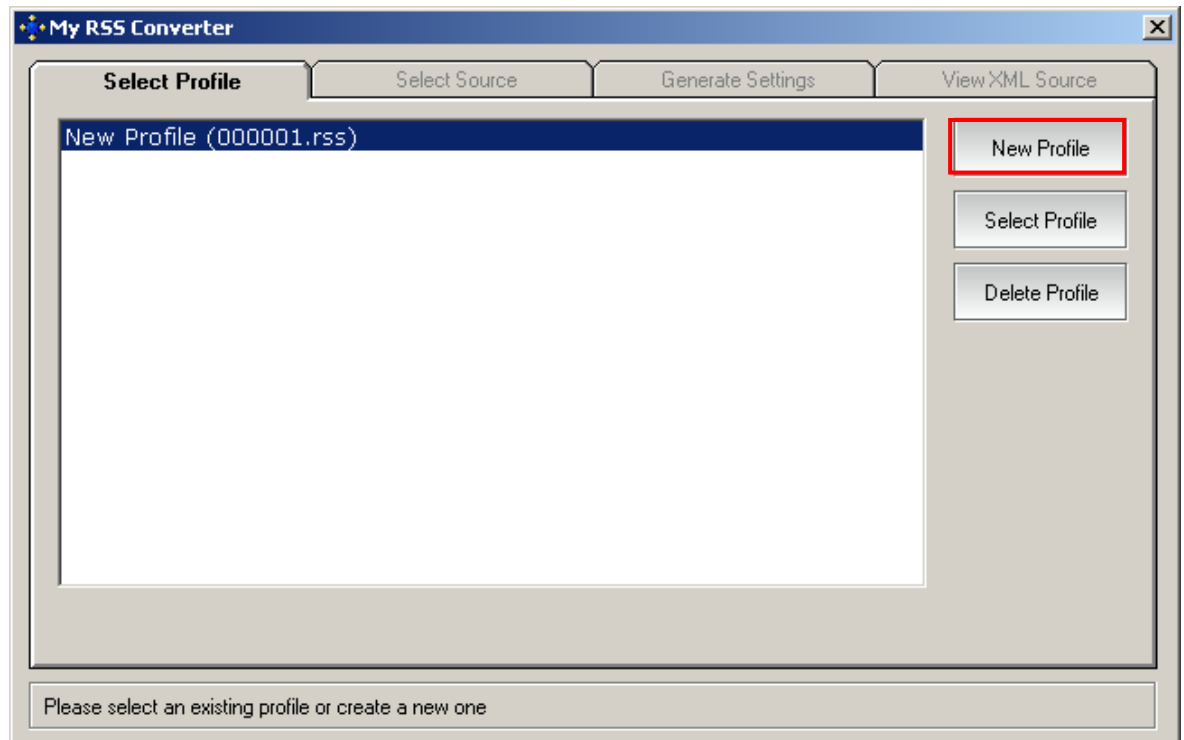


Figure 10: Creating a new profile (step 1/2)

The following screen will be displayed.

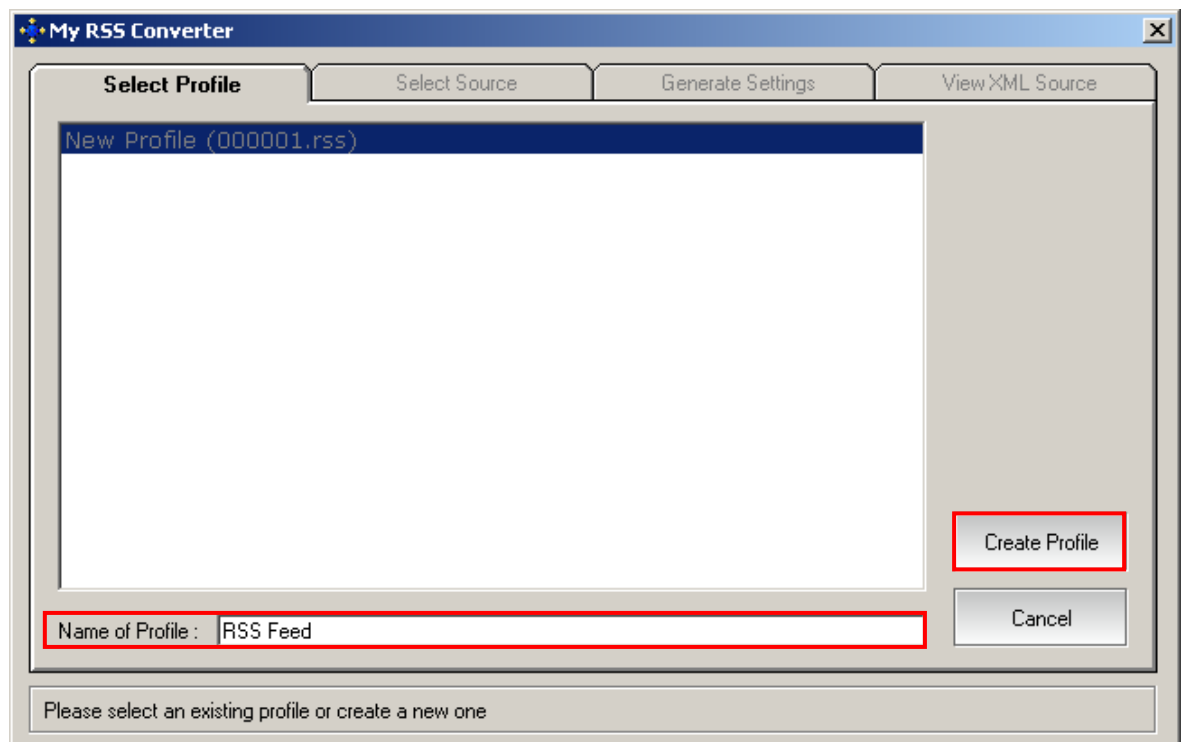


Figure 11: Creating a new profile (step 2/2)

Enter the name for the new profile and click on the “Create Profile”. The new profile will be created. The next step is selecting the feed source (see section 4).

3.2 Deleting a Profile

In order to delete a profile, select the desired profile in the list and click on the “Delete Profile” button.

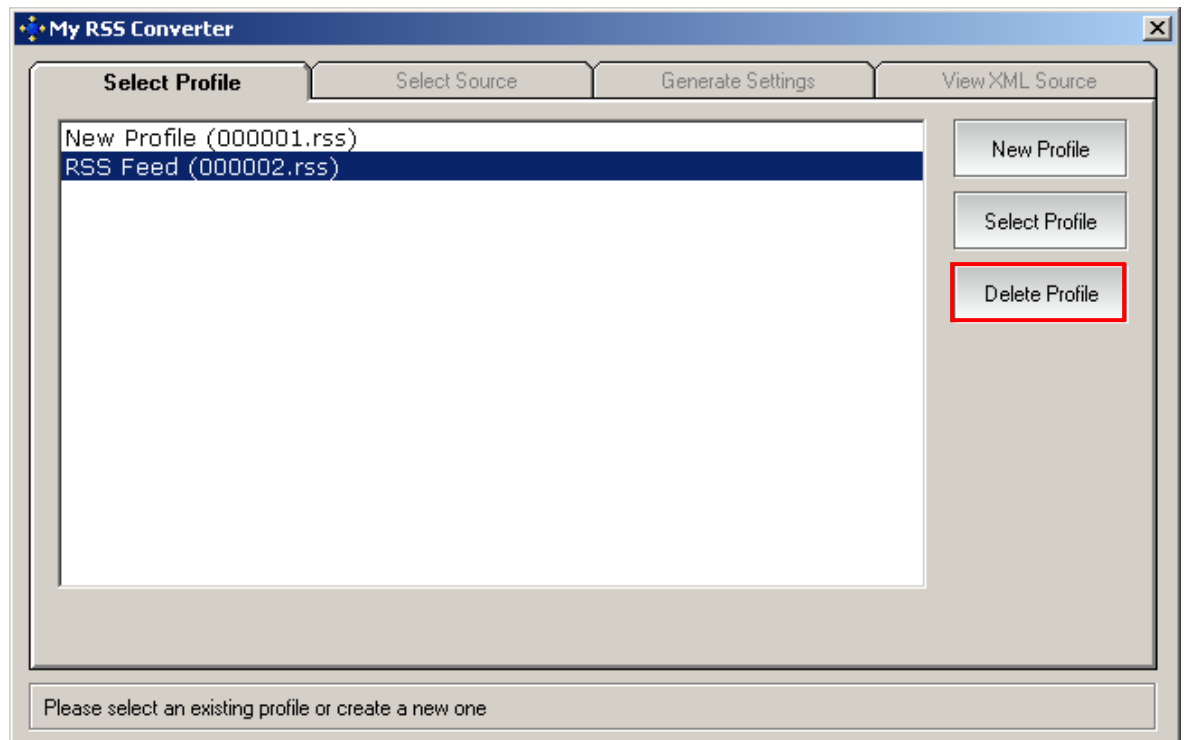


Figure 12: Deleting a profile (step 1/2)

The following screen will be displayed.

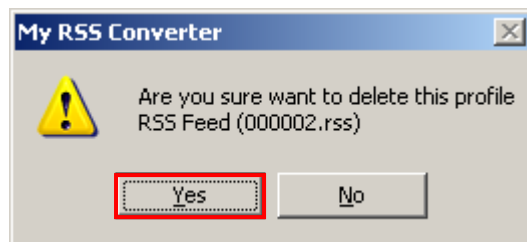
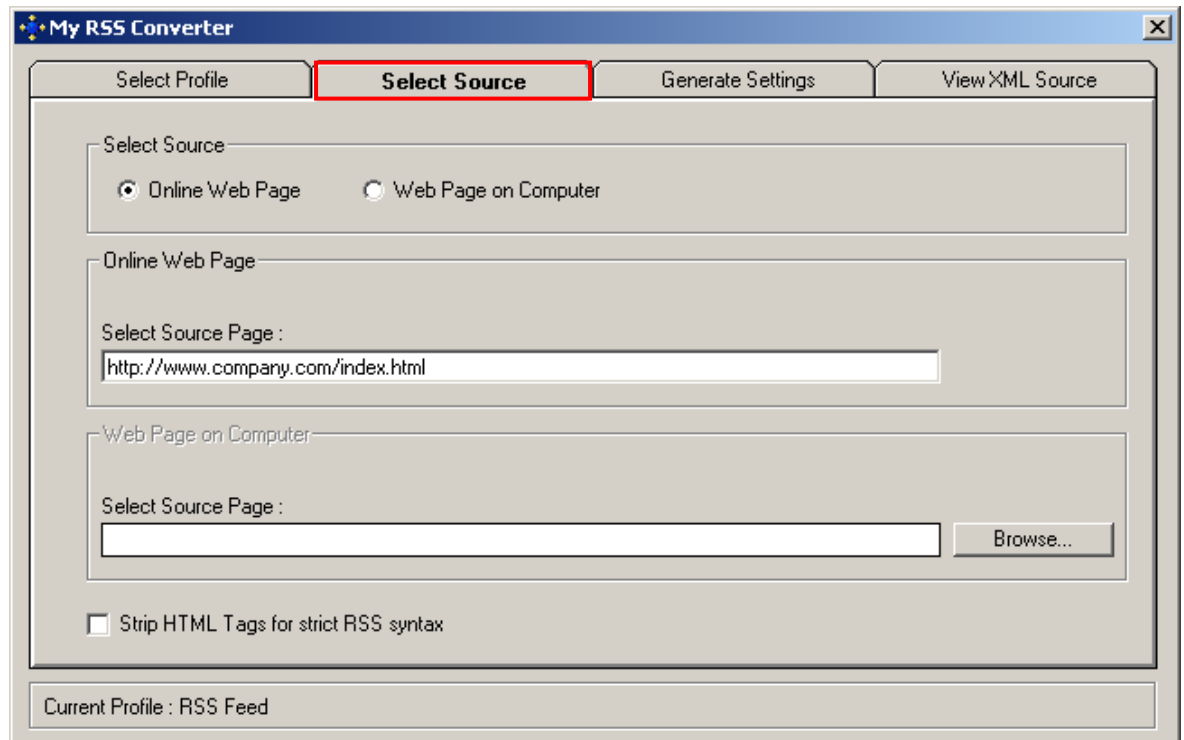


Figure 13: Deleting a profile (step 2/2)

Click on the “Yes” button to confirm the deletion of the selected profile and the profile will be deleted.

4 SELECTING RSS FEED SOURCE

After creating the profile click on the “Select Source” button inside the main menu and the following screen will be displayed.



The screenshot shows the 'My RSS Converter' application window. The 'Select Source' tab is selected and highlighted with a red border. The window has a title bar with the application name and a close button. Below the title bar are four tabs: 'Select Profile', 'Select Source', 'Generate Settings', and 'View XML Source'. The 'Select Source' tab contains the following elements:

- A 'Select Source' section with two radio buttons: 'Online Web Page' (selected) and 'Web Page on Computer'.
- An 'Online Web Page' section with a text field labeled 'Select Source Page :' containing the URL 'http://www.company.com/index.html'.
- A 'Web Page on Computer' section with a text field labeled 'Select Source Page :' and a 'Browse...' button.
- A checkbox labeled 'Strip HTML Tags for strict RSS syntax' which is currently unchecked.
- A status bar at the bottom showing 'Current Profile : RSS Feed'.

Figure 14: Selecting the source

The following parameters are available inside this screen:

- **Online Web Page** – choose this option if you want to convert a page which is online; enter the URL including the name of the page inside the “Online Web Page” field below
- **Web Page on Computer** – choose this option if you want to convert a page which is located on your computer; click on the “Browse” button to locate the desired file
- **Strip HTML Tags for strict RSS syntax** – select this option if you want to strip HTML tags from the page and retain strict RSS syntax

The next step is managing the settings for the feed. See section 5 for further information.

5 GENERATING SETTINGS

The next step after selecting the source is setting up feed parameters. Click on the “Generate Settings” button and the following screen will be displayed.

Figure 15: Setting up Feed parameters

The following parameters are available inside this screen:

- **Feed Generation Parameters**
 - **Start String** – enter HTML tag which denotes the start string i.e. the tag after which “My RSS Converter” will start converting (**e.g.** </head, closing head tag)
 - **End Title String** - this will define the end of the Item title; the Item title will begin from the end of Title String
 - **Start Item String** - this will divide the Web page into multiple items. Each time the software finds this Tag a new item will be started.
 - **End Item String** - this is useful if there is any unwanted text between the end of current item and start of next item. If this tag is absent all the text is included in item description. It is optional.
 - **End String** - enter HTML tag which denotes the end string i.e. the tag after which “My RSS Converter” will end the conversion (**e.g.** </body, closing body tag or the end of the page)
- **Feed Properties**
 - **Feed Title** – field for entering the title of the feed
 - **Feed Description** – field for entering feed description
 - **Feed Link** – field for entering the feed link

After setting the desired parameters, click on the “Generate Feed” button. The following screen will be displayed.

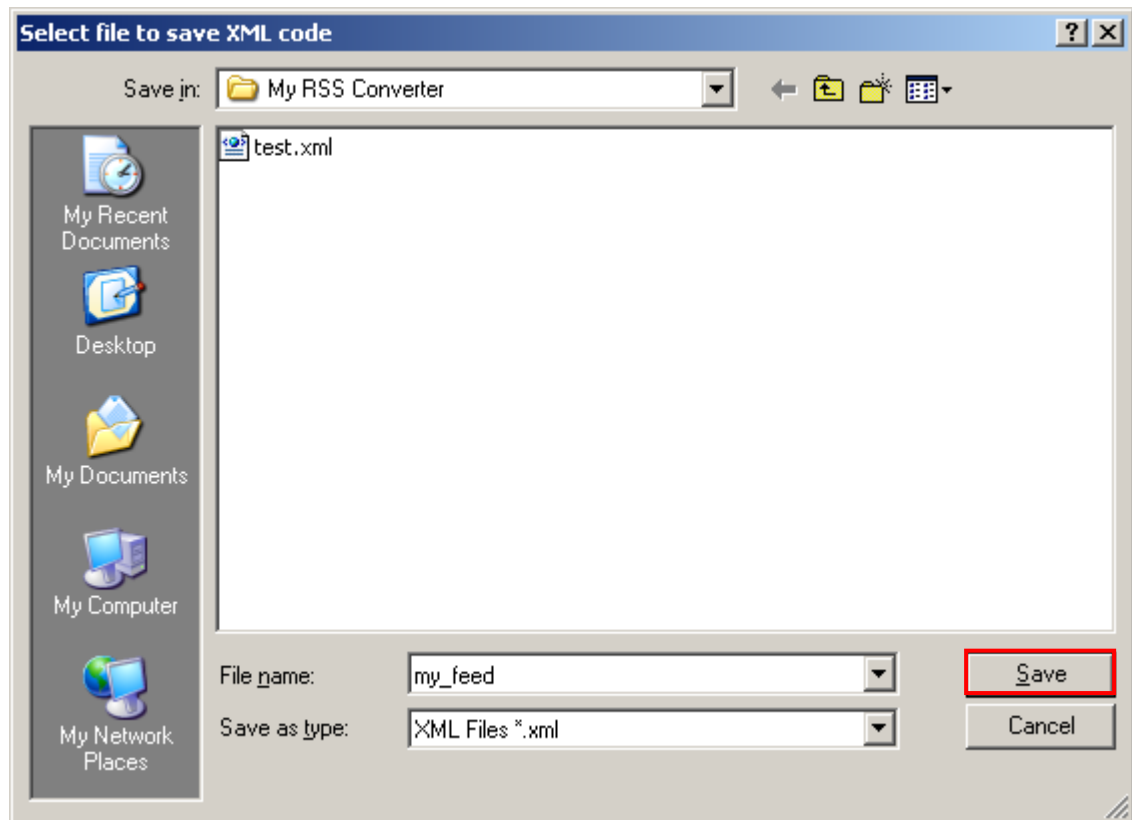


Figure 16: Setting the XML file name

Set the name for the RSS file (XML format) and click on the “Save” button in order to save it (**note:** the file is saved into **C:\Program Files\My RSS Converter**).

Once you click on the “Save” button the RSS file will be saved and the “View XML Source” screen will be displayed where you can view the result of the conversion.

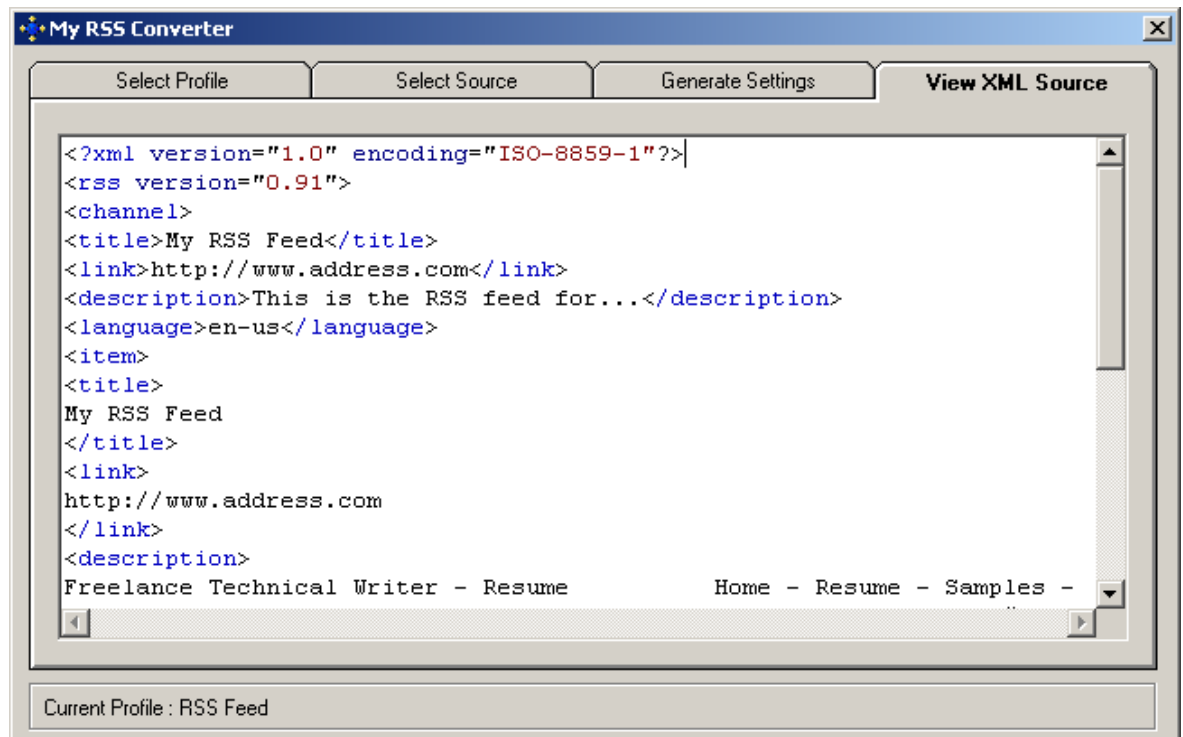


Figure 17: Viewing XML Source